

Biove

Life Sciences

*“Enriching Life through
Holistic Healing for
better Health”*





Scope Of Nutraceuticals

Every plant in this world is a natural medicine
for some disease or other,
Finding the right herb for right ailments by
Heritage, Research & Technology.

Upgraded Herbals

The herbs used by Biove are used in the world's oldest traditional system of medicine,
Like TCM (China) and Ayurveda (India), which dates back over 5,000 years.

Biove Uses modern technology with knowledge of heritage to make innovative products
with standard accuracy, efficacy and safety

Global Scenario

Annual Growth Of herbal products and
nutraceuticals is at a Rate of **7% Globally**
By 2050 it will reach **5 trillion.**





Manufacturing Facilities

Our facility are Installed with Automated production lines with modern ISO,GMP approved machineries,



R & D

Biove Strongly believe in R & D and our key strength is our research.

Our scientists come from well experienced vast and diverse background of the R&D this gives us unique insights into the world of herbs, helping us understand, discover and develop breakthrough products. We use advanced technology and methods to ensures accuracy, efficacy and safety.

350 - Finished R&D Products

30- In R & D pipeline



ORGANIC FARMING

Biove works direct with farmers of various states in India like Gujarat, Himachal pradesh Madhya Pradesh,Tamilnadu, and kerala.

We support farmers as a part of our CSR on technical guidance in organic farming of herbs.



Biove Innovation

To Improve Product Efficacy From Plants to Products

Super Critical Co2 Extraction Technology

Sco2 (or) super critical co2 extraction process is the most advanced extraction process in the world.

Biove uses this technique to its key constituents and extract the most potential actives from the natural herbs, by sco2 extraction process every nutrients in a raw herb can be isolated

At super critical state upto 100%.

Where as ordinary extraction techniques can isolate the nutrient from raw natural herb only

Upto 20 to 30% during heat many essential phyto nutrients and phyto chemicals get demolished.

By using sco2 extraction technique the efficacy of the product can be improved to 3 x times higher,

This naturally gives biove products a top most efficacy then any other products.



sCO₂
Extraction Technology



Biove
Life Sciences

Biove

Product Category

Wide Range Of Natural And Safe Products

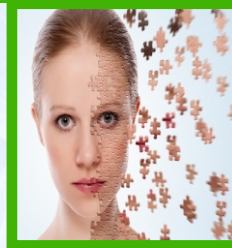
Gynaecology



Diabetes



Dermatology



Fertility



Orthopedic



Gastroenterology



Cardiovascular



Immunity & Fatigue



Biove
Life Sciences

Biove

Life Sciences

“Products brief”



Potential combination

CardimTM Capsules

*Natural Omega Fatty Acids
& Resveratrol Advantage*

*Regulates LDL, HDL levels
Strong VasoDilator &
Nitric Oxide Regulator*

Composition

Each 500mg Capsule Contains Ext Of

Garcinia Cambogia extract (fruit)	210mg
Terminalia Arjuna extract(Bark)	200mg
Vitis Vinifera extract(seed)	185mg
Linum Usitatissimum extract(seed)	205mg
Rubia Cordifolia extract(whole plant)	50mg
Allium sativum extract(bulb)	50mg
Acacia catechu extract(bark)	50mg
Piper Nigrum extract(fruit)	50mg

Indications

Regulates Atherosclerosis, Dyslipidemia
Stoke, Increased Blood Pressure
Ischemic Heart Disease, Varicose veins

Mode Of Action

Cardim Increases coronary artery flow, Regulates HDL Levels to Normalcy, Improves arterial and Venous Circulation. Regulates hypertriglyceridaemia, free fatty acid, Plasma LDL, VLDL cholesterol and normalizes blood pressure and regulates complete circulation, Suppresses de novo fatty acid synthesis Inhibits platelet aggregation prevents endothelial cell damage of arteries.

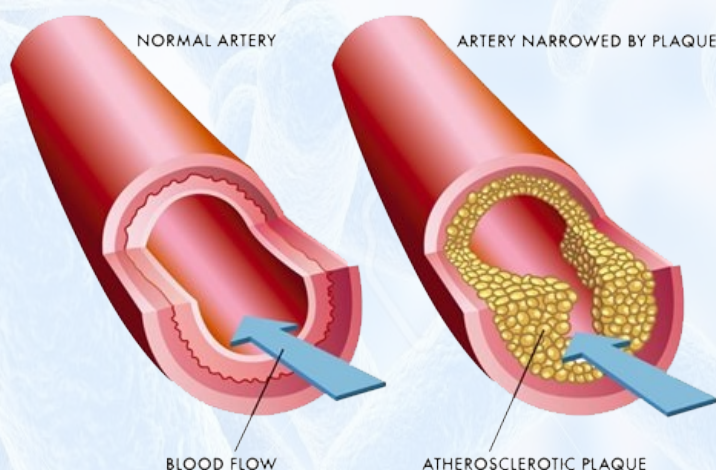
Dosage

2 capsules after food with water.

Packing

Container - 60's Vegetarian capsules

ATHEROSCLEROSIS



IN MANAGEMENT OF CARDIOVASCULAR SYSTEM

**Triple
Action
Formula**

BIOVETM JOIN-CRTM Capsules

sCO₂
Extraction Technology

Composition

Each 500mg Capsule Contains Ext Of

Boswellia serrata extract	175mg
Cissus quadrangularis extract	150mg
Curcuma Longa extract	140mg
Commiphora Wightii extract	140mg
Alphina Galanga extract	100mg
Boerhavia Diffusa extract	85mg
Vitex Negundo extract	75mg
Zingiber Officinale extract	75mg
Piper Nigrum extract	60mg

Indications

Osteoarthritis, Rheumatoid Arthritis
Sprains, Strain, Myalgia, Fractures
Cartilage Breakdown

Mode Of Action

Biove Joint -CR reduces hyperactivity of microglia, Regulates cox 2 & regulates synovial fluid, Reduces Inflammation, high fiber content, increases calcium Uptake in bones. Reduces oxidative stress, strengthens Bones and muscles from osteoporosis, It increases joint mobility, Reduces pain and oedema. Biove Joint CR is a reliable supplement for soft tissue inflammation caused by excess strain like neck pain, low back pain and joint pain (Arthritis).

Dosage

2 capsules after food with water.

Packing

KING : 10's Capsules

Container - 60's Vegetarian capsules



** Boswellia Serrata
35 % AKBA -*

A key Anti inflammatory Phytonutrient

** Cissus Quadrangularis
Ketosterones- 25%*

** 95% Curcumin*

Advantages

- ❖ High Fiber
- ❖ Reduces Hyperactivity of Microglia,
- ❖ Regulates Cox - 1, Cox 2
- ❖ Regulates Synovial fluid



Manage Your Weight
very easy Naturally

Biove FIT~CRTM Capsules



**65%
HCA - K+**
Triple Strength

Composition

Each 500mg Capsule Contains Ext Of	
Coleus forskohlii extract	250mg
Garcinia cambogia extract	250mg
Green Coffee been extract	200mg
Green tea extract	100mg
Wheat germ extract	100mg
Zingiber officinale extract	50mg
Piper nigrum extract	50mg

Indications

Weight Management

Mode Of Action

Biove Fit CR has 65%(HCA), Prevents Conversion Of Carbohydrates into Fat, Chlorogenic Acid Increases Glucose and Fat Metabolism, Forskolin 20% Std Stimulates Adenylate cyclase Enzyme Helping cAMP cells melt away stored Fat, Obcin prevents accumulation of cholesterol & triglycerides. Regulates LDL & HDL levels and body metabolism.

Dosage

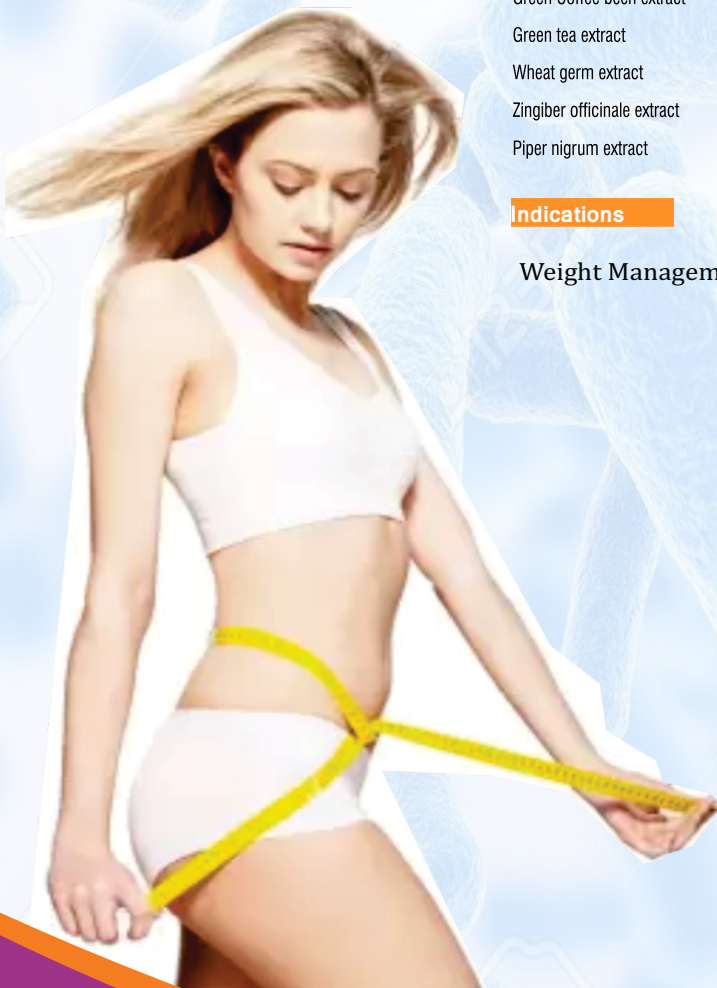
2 capsules after food with water.

Packing

Container - 60's Vegetarian capsules

✓ *Powerful White Fat Cell Reducer*

✓ *Forskolin Advantage*



Coleus Forskohlii



Green Coffee Been



Garcinia Cambogia

sCO₂
Extraction Technology

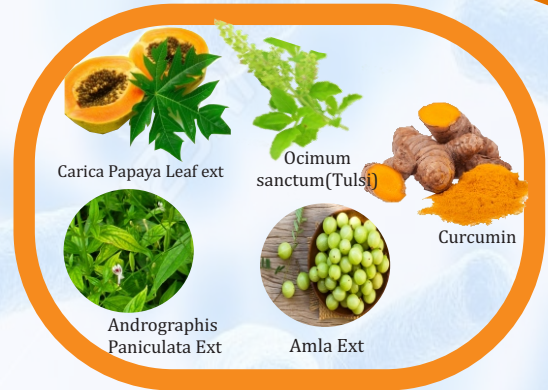
First of its kind
Natural immune booster
+
Advanced Antioxidants
SOD (Superoxide Dismutase)

Potential Immunomodulator

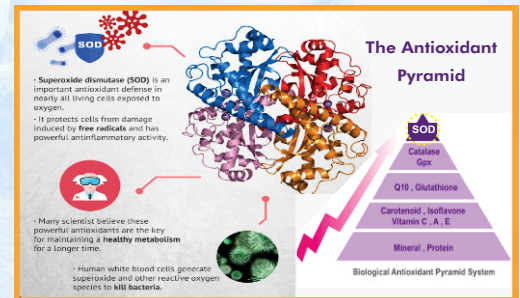
IMUNO-CRTM

sCO₂
Extraction Technology

Capsules



+
Advanced Antioxidants
SOD
Superoxide Dismutase



Superoxide dismutase is an enzyme extracted from Cucumis melo fruit Extracts, SOD is a highly effective anti-oxidant that was classified as a primary antioxidant. It can eliminate the highest level of free radical, that helps break down potentially harmful oxygen Radicals in cells which prevents damage to Cells and tissues. SOD is a highly effective of chronic inflammation, SOD can be found in all living cells since birth, but it will reduce gradually with age.

Composition

Each 500mg capsule contains :	
Tribulus terrestris extract (Whole plant)	110mg
Tinospora cordifolia extract (Root)	105mg
spirulina (<i>Arthrospira Platensis</i>) powder	85mg
Terminalia arjuna extract (Bark)	80mg
Clove extract (<i>Syzygium aromaticum</i>)	80mg
Garlic extract (<i>Allium sativum</i>) (Bulb)	70mg
Turmeric extract (<i>Curcuma longa</i>) (Root)	60mg
Papaya extract (<i>Carica papaya</i>) (leaf)	60mg
Andrographis extract (<i>Andrographis paniculata</i>) (leaf)	60mg
Holy basil extract (<i>Ocimum tenuiflorum</i>) (aerial part)	60mg
Ginger extract (<i>Zingiber officinale</i>) (Root)	40mg
Vetiveria zizanioides extract (whole plant)	40mg
Moringa extract (<i>Moringa oleifera</i>) (leaf)	40mg
Indian Gooseberry powder (<i>Phyllanthus emblica</i>) (fruit)	30mg
Vitis Vinifera extract (seed)	35mg
Boerhavia diffusa powder (Aerial part)	35mg
Melon Fruit ext (<i>Cucumis melo</i>) (fruit)	10mg

Dosage

2 capsules after food with water.

Packing

Container - 60's Vegetarian capsules

COMPLETE IMMUNITY SOLUTION

Indications

✓
✓
✓
✓
✓
**IMMUNITY
ANTI-VIRAL
COUGH
COLD
INFECTIONS**



High ORAC

DIA - CR

Capsules

With Natural
ChromiumTWIN KEY
RECEPTOR
ADVANTAGE

Advantages

- Improves General Well Being
- Relieves From Diabetes Associated Complications

Effective
Glycemic Controller

Indications

Type II Diabetes, As a Adjuvant
Therapy In Type I Diabetes Diabetes Complications

Mode Of Action

Dia CR is an effective monotherapy for Type - II Diabetes. It possesses DPP4 regulating activity which increases incretin activity, i.e. regulates blood glucose levels & suppresses excess glucagon release. Dia CR rejuvenates both alpha & beta cells in the pancreas, i.e. reduces insulin resistance. Natural Chromium regulates cell receptors and makes blood glucose levels normal, restores plasma insulin and liver glycogen levels. Protects the gastric mucosa in NIDDM condition.

Composition

Each 500mg capsule contains :	
Berberis aristata	220 mg
Trigonella foenum-graecum	200 mg
Gymnema sylvestre	160 mg
Moringa oleifera	120 mg
Pterocarpus marsupium	80 mg
Salacia reticulata	60 mg
Tinospora Cordifolia	40 mg
Cinnamon	80 mg
Piper Nigrum	40 mg

Dosage

2 capsules before food with water.

Packing

Container - 60's Vegetarian capsules



Nutraceuticals

Proprietary blends

*For
Manufacturers*

Pure Herbs
& Sports nutrition





Plant Facility



Our plant strictly adheres to the ISO 9001-2015, WHO-GMP (Goods Manufacturing Practices), HACCP, HALAL rules and regulations. We employ the most advanced facilities to manufacture Herbal and Nutraceutical Products in the form of the following:

- ✓ Capsules
- ✓ Liquids
- ✓ Drops
- ✓ Powders
- ✓ Granules



Proprietary blends Sports nutrition

Sports Nutrition			
S.NO.	INDICATIONS	PACK SIZE	PACKING DETAILS
1	Whey Protein	1, 2 & 5 Kg	Black jar with attractive label
2	Isolate Whey Protein	1, 2 & 5 Kg	Black jar with attractive label
3	Whey Protein with Multivitamin Multimineral Powder	200 Gm, 500gm, 1 kg	Tin/ HDPE Jar with label and shrink
4	Protein Powder For Mother	200 Gm, 500gm, 1 kg	Tin/ HDPE Jar with label and shrink
5	Protein Powder For All Age Group	200 Gm, 500gm, 1 kg	Tin/ HDPE Jar with label and shrink
6	Protein Powder For Kids	200 Gm, 500gm, 1 kg	Tin/ HDPE Jar with label and shrink
7	Whey Protein	200 Gm, 500gm, 1 kg	Tin/ HDPE Jar with label and shrink
8	Mass Gainer	200 Gm, 500gm, 1 kg	Tin/ HDPE Jar with label and shrink
9	Meal Replacement	200 Gm, 500gm, 1 kg	Tin/ HDPE Jar with label and shrink
10	Multivitamin	200 Gm, 500gm, 1 kg	Tin/ HDPE Jar with label and shrink
11	Vitamin and Minerals	200 Gm, 500gm, 1 kg	Tin/ HDPE Jar with label and shrink
12	BCAA	200 Gm, 500gm, 1 kg	Tin/ HDPE Jar with label and shrink
13	L Arginine	200 Gm, 500gm, 1 kg	Tin/ HDPE Jar with label and shrink
14	L Cartinine	200 Gm, 500gm, 1 kg	Tin/ HDPE Jar with label and shrink

Nutraceutical

- ✓ Energy drink
- ✓ Sports Nutrition
- ✓ Energy chocolate bar
- ✓ Multigrain energy bar



Active Nutraceutical and Herbal Proprietary Blends



For Aspiring manufacturers we provide Active Herbal Proprietary Blends or AHPB (API) for direct conversation into products. Our AHPB capabilities are steered by superior herbal & technical skills, quality-driven and cost-effective.

Advantages of AHPB

- * Direct conversations & usage of blends for the required indications
- * Cost Efficient
- * High efficacy
- * Safety & Quality
- * Bulk Packing -HDPE food grade 25 kg Drum Pack

With a commitment to protect the environment and improve the efficiency of existing processes, we have adopted innovative green technologies like Sco2, with an intent to leverage our core extraction technology expertise to introduce new products in the market and spur our growth.

Production of AHPB has been traditionally done by every herbal manufacturing companies by themselves. But in recent years many companies have opted to procure pre prepared herbal actives to curb cost.

Strengthening the product portfolio, We are consciously investing in adopting new technologies with a dual purpose of improving efficiencies and protecting the environment.

Customers can procure the blends and convert it according to their needs and forms respectively.



Active Herbal Proprietary Blends

S.NO	Active Herbal proprietary blend	Indications	Blend Forms
1	AHPB	Anti aging, skin & hair care	Powder / Granule / Liquid
2	AHPB	Herbal -Cosmetic Blends	Powder / Granule / Liquid
3	AHPB	Antilipemic, Anticholesteremic, Anit rheumatic	Powder / Granule / Liquid
4	AHPB	Hypolipidemic	Powder / Granule / Liquid
5	AHPB	Liver support	Powder / Granule / Liquid
6	AHPB	Immune support, Adaptogen	Powder / Granule / Liquid
7	AHPB	Memory support	Powder / Granule / Liquid
8	AHPB	Blood sugar support & weight management	Powder / Granule / Liquid
9	AHPB	Gastrointestinal disorders, intermittent fever	Powder / Granule / Liquid
10	AHPB	Skin care, bone health care	Powder / Granule / Liquid
11	AHPB	Anti-inflammatory	Powder / Granule / Liquid
12	AHPB	Regulates menstrual period	Powder / Granule / Liquid
13	AHPB	Laxative	Powder / Granule / Liquid
14	AHPB	skin diseases and in constipation	Powder / Granule / Liquid
15	AHPB	Bone health care	Powder / Granule / Liquid
16	AHPB	Weight management	Powder / Granule / Liquid
17	AHPB	Anti diabetic	Powder / Granule / Liquid
18	AHPB	Pain management oils	Powder / Granule / Liquid
19	AHPB	Increases Platelets levels in blood, dengue fever	Powder / Granule / Liquid
20	AHPB	liver tonic	Powder / Granule / Liquid

21	AHPB	Blood sugar support and cardiovascular support	Powder / Granule / Liquid
22	AHPB	Anti-inflammatory	Powder / Granule / Liquid
23	AHPB	Digestive support and Anti-inflammatory	Powder / Granule / Liquid
24	AHPB	Memory and concentration enhancer	Powder / Granule / Liquid
25	AHPB	Skin care and memory support	Powder / Granule / Liquid
26	AHPB	Anti-oxidant, anti cancer	Powder / Granule / Liquid
27	AHPB	Circulatory system	Powder / Granule / Liquid
28	AHPB	Antioxidant and general health	Powder / Granule / Liquid
29	AHPB	Weight management	Powder / Granule / Liquid
30	AHPB	Diarrhoea, dysentery,	Powder / Granule / Liquid
31	AHPB	varicose veins, Phlebitis, leg ulcers	Powder / Granule / Liquid
32	AHPB	Digestive support	Powder / Granule / Liquid
33	AHPB	Natural food colourant-Phycocianin	Powder / Granule / Liquid
34	AHPB	Men's health support and Parkinson's disease	Powder / Granule / Liquid
35	AHPB	Dementia	Powder / Granule / Liquid
36	AHPB	Immunes support	Powder / Granule / Liquid
37	AHPB	Menstrual problem,	Powder / Granule / Liquid
38	AHPB	In Colic, seizures, cough, urinary problem,	Powder / Granule / Liquid
39	AHPB	Pain Reliver	Powder / Granule / Liquid
40	AHPB	Hepatocare	Powder / Granule / Liquid
41	AHPB	Versatile antioxidant	Powder / Granule / Liquid
42	AHPB	Liver support	Powder / Granule / Liquid
43	AHPB	Improve thinking, memory enhancer, physical	Powder / Granule / Liquid
44	AHPB	Galactagogue	Powder / Granule / Liquid
45	AHPB	Prostate enlargement, increase testosterone level and	Powder / Granule / Liquid
46	AHPB	Immune support	Powder / Granule / Liquid
47	AHPB	Men's health support	Powder / Granule / Liquid
48	AHPB	Hepato protective	Powder / Granule / Liquid
49	AHPB	Diabetes,	Powder / Granule / Liquid
50	AHPB	Immune support	Powder / Granule / Liquid
51	AHPB	Digestive support, rejuvenator	Powder / Granule / Liquid
52	AHPB	Antipyretic	Powder / Granule / Liquid
54	AHPB	Antioxidant	Powder / Granule / Liquid
56	AHPB	Circulation support	Powder / Granule / Liquid
58	AHPB	Detoxifier	Powder / Granule / Liquid
60	AHPB	Immune support	Powder / Granule / Liquid
62	AHPB	anti cough	Powder / Granule / Liquid
63	AHPB	Respiratory support, cough cold aid	Powder / Granule / Liquid
65	AHPB	Eye disorders	Powder / Granule / Liquid
67	AHPB	Weight management	Powder / Granule / Liquid
69	AHPB	insomnia	Powder / Granule / Liquid
71	AHPB	Antioxidant, anti-inflammatory, anti cancer	Powder / Granule / Liquid
73	AHPB	laxative	Powder / Granule / Liquid
74	AHPB	hypertension	Powder / Granule / Liquid
75	AHPB	hypolipidemic	Powder / Granule / Liquid

Sco2 Pure Herbal Extracts

Pure Herbs

Pure Herbs is a division of Biotis, Manufactures Pure Herbal extracts with high efficacy and standards, Meeting the growing needs of herbal extracts in pharmaceutical, cosmetic, ayurvedic and food industry, We manufacture more than 60 standardized extracts.

Pure herb is a Perfect blend of Sco2 Herbal Extracts with Pure Herbs Extracts, Which gives 3 x times superior efficacy then other ordinary herbal extracts.



Pure Herbs = sCO₂ Herbal Extracts + Superior Herbal Extracts

3X Times
Superior Product Efficacy



Premium Sco2 Herbal Ext Blend

Perfect blend of Sco2 Herbal Extracts With Pure Herbs Extracts

Pure Herbs - 3 X times Superior Efficacy

S. No	Product Name (Botanical Name)	Bio -Markers	Testing Method	Major Application
1	Amla extract (Embllica officinalis)	Hydrolyzable tannin 20%-45%	Gravimetric	Anti aging, skin & hair care
2	Aloe (Aloe vera)	Ext	Gravimetric	Cosmetic ingredient
3	Garlic extract (Allium sativum)	Allin -1.3%	HPLC	Antilipemic, Anticholesteremic, Anit rheumatic
4	Onion extract (Allium cepa)	Quercetin	HPLC	Hypolipidemic
5	Andrographis extract (Andrographis paniculata)	Andrographolides 10%,20% & 95%	HPLC	Liver support
6	Ashwagandha extract (Withania somnifera)	Total withanolides 1.5%-2.5% & 5.0%	Gravimetric	Immune support, adaptogen
7	Bacopa extract (Bacopa monnieri)	Bacosides 10% , 20.0% & 50%	HPLC/UV	Memory support
8	Banaba extract (Lagerstroemia speciosa)	Corosolic acid 1% & 2%	HPLC	Blood sugar support & weight management
9	Black pepper extract (Piper nigrum)	Piperin 95%	HPLC	Gastrointestinal disorders, intermittent fever
10	Boswellia extract (Boswellia serrata)	Boswellic acids 60% & 90%	Gravimetric / HPLC	Skin care, bone health care
11				
12	Bamboo extract (Bambusa arundinacea)	Natural silica 75%	Gravimetric	Regulates menstrual period and help digestion of proteins

13	Calcium sennosides (Cassia angustofolia)	Sennosides 6.0% ,10% & 20%	HPLC	Laxative
14	Cassia extract (Cassia fistula)	Saponin 10%	Gravimetric	skin diseases and in constipation
15	Cissus extract (Cissus quadrangularis)	Total Ketosterones 2.5% 10% & 40%	Gravimetric	Bone health care
16	Coleus forskohlii extract (Coleus forskohlii)	Forskolin 1.0% , 10.0% & 20%	HPLC	Weight management
17	Coffee bean extract (Coffea robusta)	Chlorogenic acid 45%,50% & 60%	HPLC	Antioxidant & weight management
18	Cinamon extract (Cinnamomum cassia)	Polyphenols 10% & 20%	UV	Anti diabetic, antioxidant
19	Papaya leaf extract (Carica papaya)	Tannin 5%	UV	Antitumor, increase platelet levels in blood, dengue fever and digestive
20	Eclipta alba extract (Eclipta alba)	Bitters -3%	Gravimetric	liver tonic
21	Fenugreek extract (Trigonella foenum graecum)	Saponin 50%	Gravimetric	Blood sugar support and cardiovascular support
22	Guggul extract (Commiphora mukul)	Guggulsterones Min.2.5%	HPLC/UV	Anti-inflammatory
23	Ginger extract (Zingiber officinalis)	Gingerols 5% & 20%	HPLC	Digestive support and Anti-inflammatory
24	Ginkgo biloba extract (Ginkgo biloba)	Flavonoe glycosides -24% & terpene lactones -6%	HPLC	Memory and concentration enhancer
25	Gotu Kola extract (Centella asiatica)	Total Triterpenes 10%, 20% & 40%	HPLC	Skin care and memory support
26	Green Tea extract (Camellia sinensis)	Polyphenols 25% & 90%	UV	Anti-oxidant, anti cancer
27	Gymnema extract (Gymnema Sylvestre)	Gymnemic acid 25%, 50% & 75%	Gravimetric	Anti-diabetic and stimulates heart and circulatory system
28	Grape seed extract (Vitis vinifera)	Proanthocyanidins 95%	UV	Antioxidant and general health
29				
30	Garcinia extract Hydroxy citric acid salts (Garcinia cambogia)	Hydroxycitric acid 65% & 70 % Mg salt (water soluble salt)	HPLC	Weight management
31	Mangosteen extract (Garcinia mangostana)	Mangosteen 10% & 40%	HPLC	Dietary supplement, for diarrhoea, dysentery, skin diseases, fever and urinary disorders
32	Horse chestnut extract	Aescin , 20% & 40%	HPLC / UV	To treat hardening of the arteries, varicose veins, phlebitis, leg ulcers, hemorrhoids
33	Licorice extract (Glycyrrhiza glabra)	Glycyrrhizic Acid 10%-25%	HPLC / Gravimetric	Digestive support
34	Marigold extract (Tagetes erecta)	Lutein 10% & 20%	UV / HPLC	Natural food colourant
35	Mucuna extract (Mucuna pruriens)	L-DOPA 10% & 50%	HPLC	Men's health support and Parkinson's disease
36	Momordica extract (Momordica charantia)	Bitter Principles 2.5%-15%	Gravimetric	Blood sugar support
37	Moringa leaf extract (Moringa oleifera)	Protein 15%	Kjeldahl	Immunes support
38	Moringa seed extract (Moringa oleifera)	Protein 60%	Kjeldahl	Immunes support

39	Noni extract (<i>Morinda citrifolia</i>)	Alkaloids -0.07%	Gravimetric	In Colic, seizures, cough, diabetes, urinary problem, menstrual problem,
40	Neem leaf extract (<i>Azadirachta indica</i>)	Bitter Principles 2.5% & 10%	Gravimetric	Antibacterial
41	Neem bark extract (<i>Azadirachta indica</i>)	Bitter principles 2.5% & 5.0%	Gravimetric	Antibacterial
42	Phyllanthus amarus extract (<i>Phyllanthus amarus</i>)	Bitter principles 2.5% & 5.0%	Gravimetric	Hepatocare
43	Pomegranate extract (<i>Punica granatum</i>)	Ellagic acid 5% & 40%	HPLC	Versatile antioxidant
44	Kutki extract (<i>Picrorhiza kurroa</i>)	Kutkin -5% Bitter principles 8% & 10 %	HPLC	Liver support
			Gravimetric	
45	Ginseng (<i>Panax ginseng</i>)	Ginsenoside 20%	HPLC	Improve thinking, memory enhancer, physical stamina, athletic endurance
46	Shatavari extract (<i>Asparagus racemosus</i>)	Saponin 20%-50%	Gravimetric	Galactagogue
47	Saw palmetto extract (<i>Serenoa repens</i>)	Fatty acid 45% & 90%	GC-MS	Prostate enlargement, increase testosterone level and reduce hair loss
48	Shilajit extract (<i>Asphaltum mineral pitch</i>)	Total fulvic acid 2.5%	Gravimetric	Immune support
49	Safed musli (<i>Chlorophytum borivilianum</i>)	Saponin 20% & 40%	Gravimetric	Men's health support
50	Silymarin extract (<i>Silybum marianum</i>)	Silymarin 70% & 80%	UV	Hepato protective
51	Spirulina powder (<i>Spirulina platensis</i>)	Protein 60%	Kjeldahl	Diabetes, hypertension, hypolipidemic
52	Tribulus extract (<i>Tribulus terrestris</i>)	Saponin 20% & 80%	Gravimetric	Immune support
53	Triphala extract (<i>Embolica officinalis</i> , <i>Terminalia chebula</i> and <i>Terminalia bellirica</i>)	Tannin 20% & 40%	Titration	Digestive support, rejuvenator and laxative
54	Tulsi extract (<i>Ocimum sanctum</i>)	Ursolic acid 1.5% & 2.5%	HPLC	Antipyretic, anti cough and cold, anti-oxidant
55	Tulsi extract (<i>Ocimum sanctum</i>)	Tannin 10%	Gravimetric	Antipyretic, anti cough and cold, anti-oxidant
56	Turmeric extract (<i>Curcuma longa</i>)	Curcuminoids 95%	HPLC / UV	Antioxidant
57	Arjuna extract (<i>Terminalia arjuna</i>)	Tannin-30%	Gravimetric	Circulation support
58	Terminalia extract (<i>Terminalia bellirica</i>)	Tannin -40%	Gravimetric	Detoxifier
59	Tinospora extract (<i>Tinospora cordifolia</i>)	Bitter 2.5% & 5%	Gravimetric	Immune support
60	Vasaka extract (<i>Adhatoda vasica</i>)	Alkaloids 1%-5%	Gravimetric	Respiratory support
61	Vasaka extract (<i>Adhatoda Vasica</i>)	1% Vasicine	HPLC	Respiratory support, cough cold aid
		2% Total alkaloids	Gravimetric	
62	Lodra extract (<i>Symplocos racemosa</i>) extract	Saponin- 5%	Gravimetric	Eye disorders, diarrhea
63	White kidney beans extract (<i>Phaseolus vulgaris</i>)	Amylase Inhibitory activity 2000, 10,000-20,000 unit/gm	Gravimetric	Weight management
64	Valeriana ext (<i>Valeriana wallichii</i>)	Valerianic acids 0.8%	HPLC	Calms nervous system, used in insomnia
65	Curcumin 95 % (<i>Curcuma longa</i>)	Curcuminoid NLT 40%	HPLC	Antioxidant, anti-inflammatory, anti cancer



Exclusive Raw Actives

Curcumin 98

Curcumin 98% is extracted from Turmeric (*Curcuma Longa*) which is a potent Anti-Inflammatory for cancers and cardio vascular diseases Biotis has a new curcumin active which posses total residual solvents less than 500ppm while other curcumin extracts 95% is around 5000 ppm. Efficacy of the product becomes 5 X times high.

Packing - 30's capsules ,90's capsules, 25Kg Bulk drum Pack Powder Form



Moringa 15

Moringa 15 % extracted from Moringa Leaf (*Moringa oleifera*) Which has Calcium,Iron,Magnesium,Mangnese,Phosphorus Potassium,Sodium,Zinc,vital Vitamins and Dietary fiber.

Moringa takes care of the bodies complete nutrition requirements

Packing - 30's capsules ,90's capsules, 25Kg Bulk drum Pack



Moringa Seed 60

Moringa Seed Extracted from *Moringa oleifera* seeds with protein content of 60% Which has vital Vitamins,Minerals and Dietary fiber. Major application for immunity support

Packing - 30's capsules ,90's capsules, 25Kg Bulk drum Pack Powder Form



Stevia 0 Natural Sugar

Stevia is a Natural sweetener and sugar substitute extracted from the leaves of the plant species

Stevia rebaudiana. Which has 30 to 150 times the sweetness of sugar;The body does not metabolize the glycosides in stevia and therefore it contains 0 calories like artificial sweeteners. Stevia's taste has a slower onset and longer duration than that of sugar.

Packing - 25Kg Bulk drum Pack

Color - Milk White & pale green both are available



Boswellia AKBA 38

AKBA Is a key Anti-Inflammatory In *Boswellia serrata*, We extract 38% of AKBA, Where us other *Boswellia* Ext contain AKBA of 30% Max

Packing - 30's capsules ,90's capsules, 25Kg Bulk drum Pack



Spirulina 60

Spirulina is a (blue-green algae) Contains vital Vitamins,Minerals and dietary fiber. Major application for immunity support.

Our Spirulina has protein level upto 60% others have only upto 50% .

Packing - 30's capsules ,90's capsules, 25Kg Bulk drum Pack Powder Form

All Biove Products Has No Side Effects How ?

* 100% Phyto -(Plant) Based Extraction, Bioavailability Becomes Very High



* All Products Are Formulated Under Tridosha Neutralizing Process

* No Metals, No Microbial Contamination Proven.

Test Certificate

SGS

Test Report

Report No : CG17-016034.

Print Date : 21/05/2021

JOE No : CG17-01603

Report Control No : CGR0000775386

Sample Described by Customer as : Biove Cardim Capsules

Customer Name : Biove Life Sciences
Customer Address : No 30 / 5A-1 GNT Road
City : Tirupati Tada
Postal Code : 524401
State : Andhra Pradesh
Country : India
Sample Type :
Received :
Sample Qty. Recd. : Biove Cardim Capsules
Batch No. : B1501
Mfd : 2021
Expiry : 2023

End Date : 21/05/2021

Test/Parameter	Method	Result	Unit	Requirement/Limit	
				Min	Max
Arsenic (as As)	SO-IN-MUL-TE-063A by ICP	0.14	mg/kg	-	1.1
Mercury (as Hg)	SO-IN-MUL-TE-063A by ICP	BLQ (LOQ : 0.01)	mg/kg	-	1.0
Lead (as Pb)	SO-IN-MUL-TE-063A by ICP	0.14	mg/kg	-	2.5
Total plate count	ISO 4833 - Part 1 2013	4500000	cfu/g	-	-

Per pro SGS India Private Ltd

Authorized Signatory

Per pro SGS India Private Ltd

Authorized Signatory

****End of Report****

Page 1 of 1

This document is issued by the Company under its General Conditions of Service printed overleaf or available on request and accessible at <http://www.sgs.com/india-GB/Terms-and-Conditions.aspx> for electronic documents. Attention is drawn to the limitation of liability, indemnification and limitation clauses set forth herein. Any holder of this document is advised that information contained herein reflects the Company's findings at the time of its issuance only and within the limits of Client's instructions, if any. The Company's sole responsibility is to its Client and this document does not constitute parties to a transaction from assuming all their rights and obligations under the transaction documents. Any unauthorized alteration, forgery or falsification of the content or appearance of this document is unlawful and offenders may be prosecuted to the fullest extent of the law. Unless otherwise stated the results shown in this test report refer only to the sample(s) tested and such sample(s) are retained for 7 days (in case of perishable items) and 30 days for all other samples. The samples from regulatory bodies are to be retained as specified. This document cannot be reproduced except in full, without prior written approval of the Company.

For any feedback or complaint please write to us at feedback.mishra@sgs.com.

SGS India Pvt. Ltd.

Regd. & Corp. Off. : SGS House, 4B, A.S. Marg, Vilepari (West), Mumbai-400053. Tel : (022) 25796421 to 28 Fax : (022) 25796431 to 35 www.sgs.com

Member of the SGS Group (SGS SA)

Thank you

Biove Life Sciences
No 30 / 5 A- 1 GNT Road SPSR
Nellore- 524401 Andhra Pradesh india
Email : care1.biove@gmail.com
Ph :+91-73730-34543,
Web : www.biovelife.com

